



Telling Time

Clock Reference Sheet



● **Hour Hand** — the **short** hand. It tells which **hour** it is.

● **Minute Hand** — the **long** hand. It tells how many **minutes** past the hour.

The minute hand starts at **12** (0 minutes) and goes around. Each number = **5 minutes**.

— Hour (short) — Minute (long)

Each Number = How Many Minutes

1

5 min

2

10 min

3

15 min

4

20 min

5

25 min

6

30 min

7

35 min

8

40 min

9

45 min

10

50 min

11

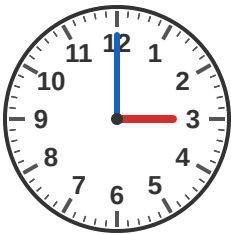
55 min

12

60 min

Common Times

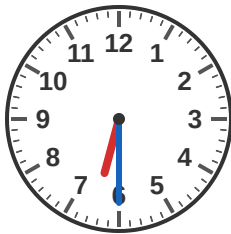
O'Clock



3:00

Minute hand on 12

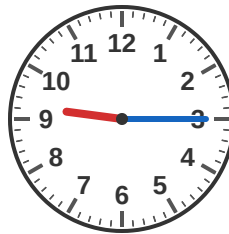
Half Past



6:30

Minute hand on 6

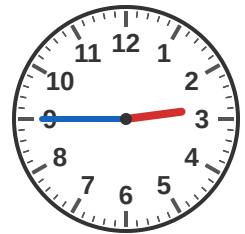
Quarter Past



9:15

Minute hand on 3

Quarter To



2:45

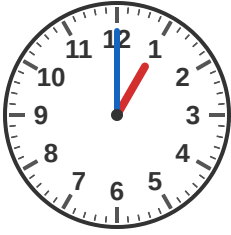
Minute hand on 9



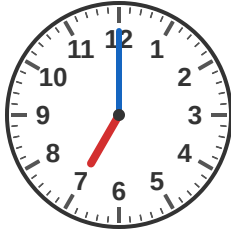
What Time Is It?

Write the time shown on each clock

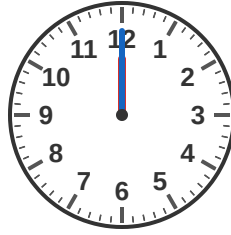
#1



#2



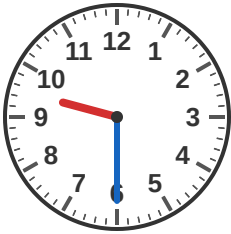
#3



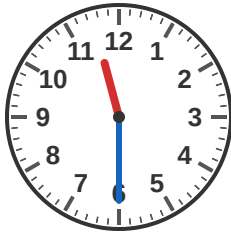
#4



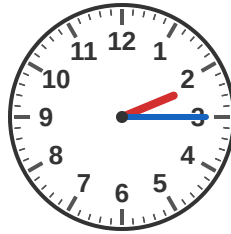
#5



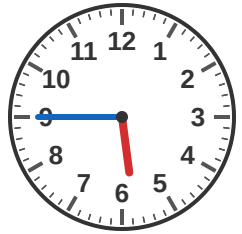
#6



#7



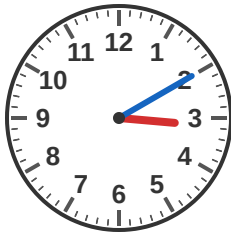
#8



#9



#10



#11



#12

